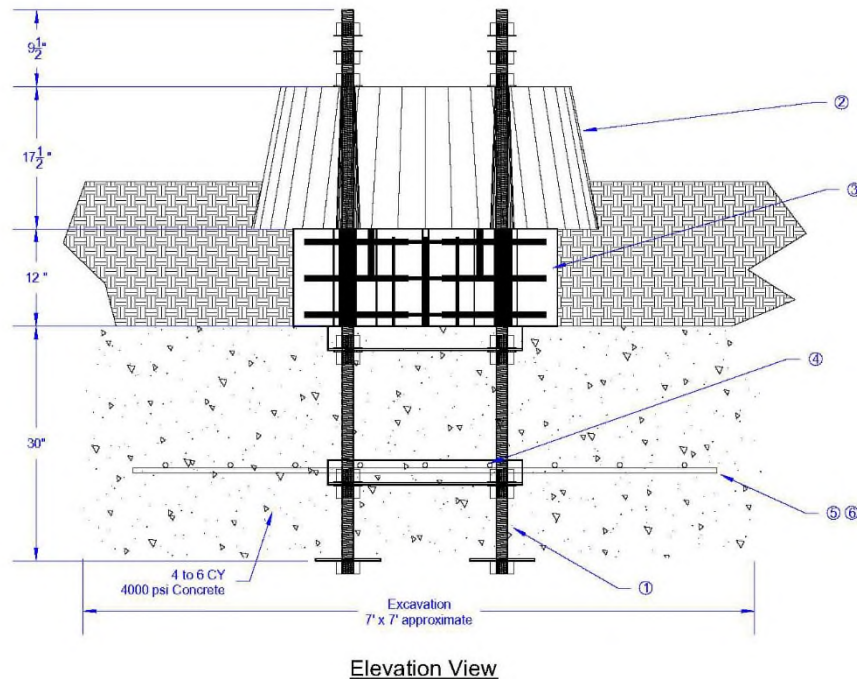


Dixie Precast, Inc.

DP-4BUF Pour In Place Single Mast Cantilever Foundation

Installation Instructions

1. The DP-4BUF Pour In Place Foundation is shipped with the frame assembly assembled, ready for installation. The wood framing stabilizing the bolts of the assembly is placed at the height of the precast top after installation. This allows for excavation to the proper depth.
2. Layout the foundation excavation area in compliance with railroad standards and/or state D.O.T. standards and specifications. For sufficient volume of concrete, an approximate area of 7' x 7' is recommended.



3. Determine the required depth of the excavation. The overall height of the DP-4BUF Foundation is 59 1/2" from the top of the finished foundation to the bottom of the excavation. Excavation depth should be made in accordance with specific railroad standards for the location of the top of the foundation (i.e. crown of the road, top of the tie, top of the rail, etc.).

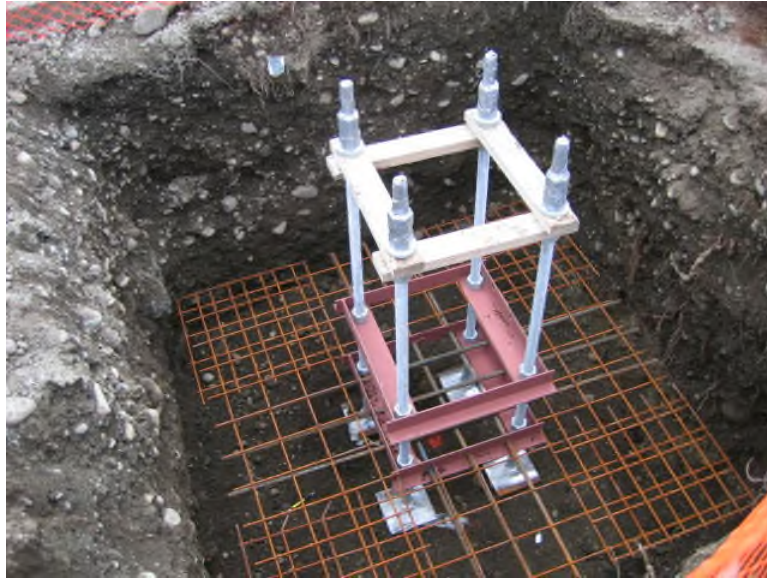
4. Excavate for the foundation, with the recommend minimum excavation area of 7'-0" X 7'-0". Level the bottom of the excavation to insure proper alignment of the foundation.



5. Insert the 6 pieces of # 4 reinforcing steel through the holes in the bottom frame of the Frame Assembly. The rebar should be centered when inserting through the frame. Place one 6x6 Rebar Mat on each side of the frame assembly and tie to the #4 rebar using provided ties.



6. Place the assembly into the excavation, insuring the proper alignment of the bolts to the road and/or track. Check to insure that the assembly is level. There should be approximately 6" clearance from the end of the rebar/matting to the walls of the excavation.



7. Using minimum of 4000 psi ready mix concrete, pour approximately 5 cubic yards into the excavation. The ready mix concrete should be poured level with the top frame of the bolt assembly. The concrete surrounding the frame should be leveled to insure the level installation of the precast spider section.





8. After the ready mix concrete has set up, remove the nuts, washers, and wood frame from the top of the bolts. Place the spider section and top section in place, securing with a flat washer, lock washer, and nut on each bolt. Leveling nuts are installed on each bolt prior to installation of the structure.

Notes:

If existing utilities interfere with the placement of the frame assembly and rebar, the lower frame can be removed and reassembled in the excavation to accommodate the utilities.

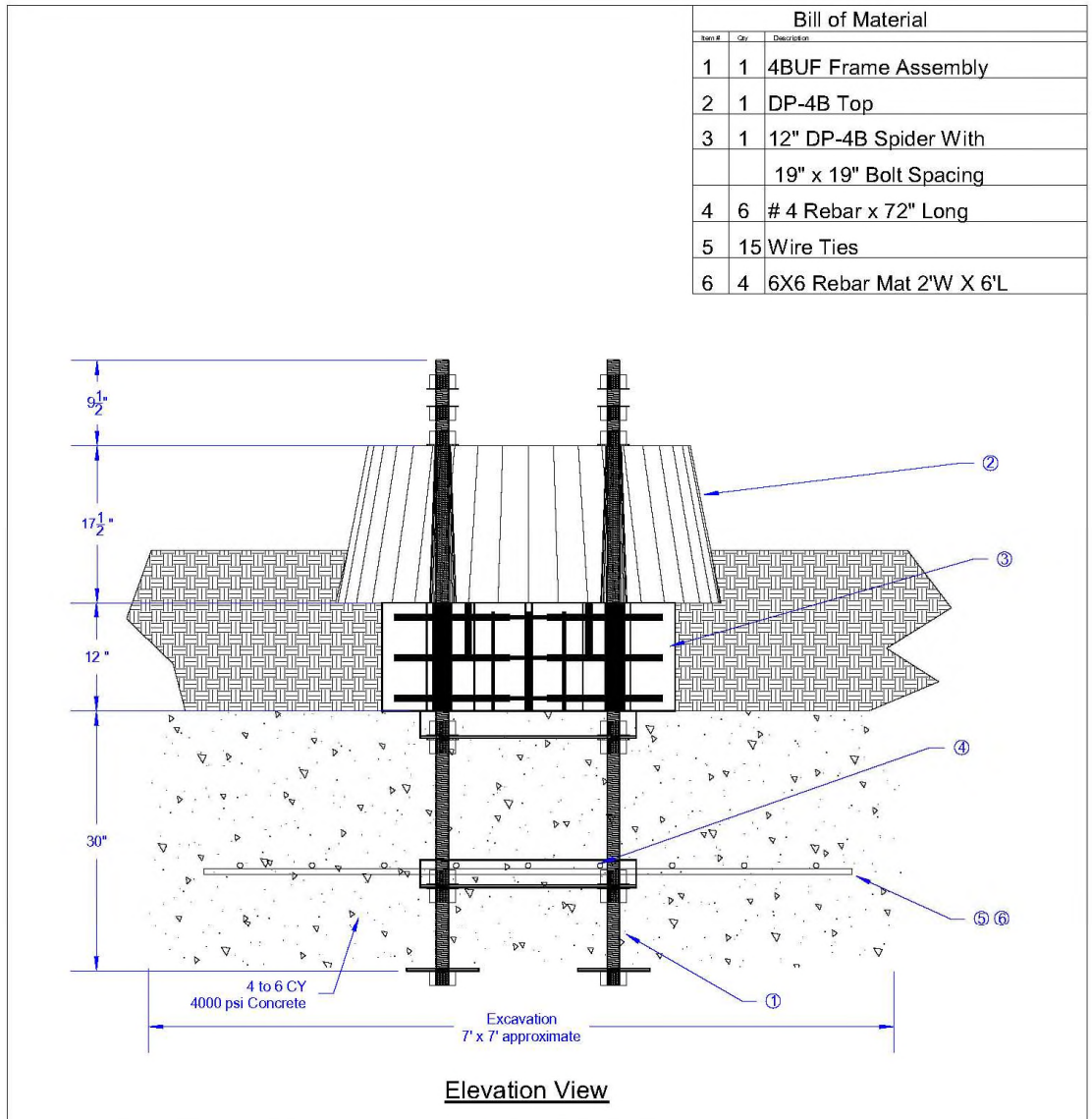
Existing utilities can be encased in a field supplied pvc conduit that has been split, placed around the utility, and taped together for protection from the ready mix concrete.

The ready mix concrete can be leveled with concrete floats, trowels, or through the use of a flat head shovel or the like.

| | | | |
|---|---|--|--|
|  | DIXIE PRECAST, INC. | | DIXIE PRECAST THIS PRINT REPRESENTS A PROPRIETARY PRODUCT AND IS OWNED BY DIXIE PRECAST INC. FOR THE USE OF ITS CUSTOMERS. IS NOT TO BE CONVEYED, NOR COPIED BY ANY OTHER PARTY WITHOUT THE EXPRESS WRITTEN APPROVAL OF THE OWNER. |
| | 2950 ANGELETTE DRIVE, AUSTELL, GEORGIA 30106 (770) 944-1930 Fax (770) 944-9136 www.dixieprecast.com | | |
| | | | |
| | | | |

THIS PRODUCT IS COVERED BY ONE OR MORE PATENTS

PATENTED



DP-4BUF Pour In Place Cantilever Foundation

Elevation View